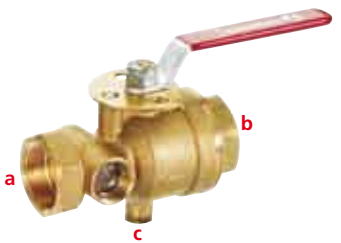


## Test And Drain Valve

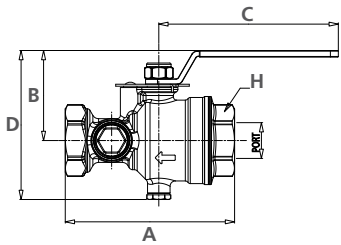
### A61



► FEMALE x FEMALE

**Standard equipment:**

Female NPT inlet and outlet, forged brass body, brass finish ball with teflon seats.



SPECIFY THREAD

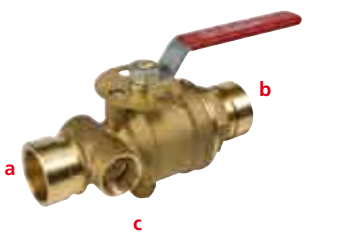
CERTIFICATIONS



FM approved at 300 psi \*  
UL listed •

a/b (Orifice - K factor)	c (plug)	PORT	A	B	C	D	H
1" (3/8"-2.8)*	1/4"	1-1/16"	5-1/32"	2-43/64"	5-11/32"	4-27/64"	1-57/64"
1" (7/16"-4.2)*	1/4"	1-1/16"	5-1/32"	2-43/64"	5-11/32"	4-27/64"	1-57/64"
1" (1/2"-5.6)* *	1/4"	1-1/16"	5-1/32"	2-43/64"	5-11/32"	4-27/64"	1-57/64"
1" (17/32"-8)* *	1/4"	1-1/16"	5-1/32"	2-43/64"	5-11/32"	4-27/64"	1-57/64"
1-1/4" (3/8"-2.8)*	1/4"	1-1/16"	5-1/32"	2-43/64"	5-11/32"	4-27/64"	1-57/64"
1-1/4" (7/16"-4.2)*	1/4"	1-1/16"	5-1/32"	2-43/64"	5-11/32"	4-27/64"	1-57/64"
1-1/4" (1/2"-5.6)* *	1/4"	1-1/16"	5-1/32"	2-43/64"	5-11/32"	4-27/64"	1-57/64"
1"-1/4" (17/32"-8)* *	1/4"	1-1/16"	5-1/32"	2-43/64"	5-11/32"	4-27/64"	1-57/64"
1-1/4" (5/8"-11.2)*	1/4"	1-1/16"	5-1/32"	2-43/64"	5-11/32"	4-27/64"	1-57/64"
1-1/4" (3/4"-14)*	1/4"	1-1/16"	5-1/32"	2-43/64"	5-11/32"	4-27/64"	1-57/64"

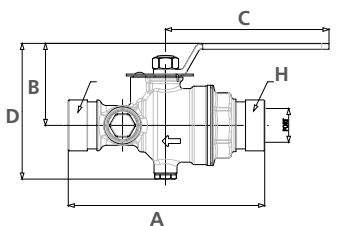
### A61



► GROOVE X GROOVE

**Standard equipment:**

GROOVE inlet and outlet, forged brass body, brass finish ball with teflon seats.



SPECIFY THREAD

CERTIFICATIONS



FM approved at 300 psi

a/b (Orifice - K factor)	c (plug)	PORT	A	B	C	D	H
1-1/4" (3/8" - 2.8)	1/4"	1-1/16"	6-13/32"	2-43/64"	5-11/32"	4-27/64"	1-1/4" GROOVE
1-1/4" (7/16" - 4.2)	1/4"	1-1/16"	6-13/32"	2-43/64"	5-11/32"	4-27/64"	1-1/4" GROOVE
1-1/4" (1/2" - 5.6)	1/4"	1-1/16"	6-13/32"	2-43/64"	5-11/32"	4-27/64"	1-1/4" GROOVE
1-1/4" (17/32" - 8)	1/4"	1-1/16"	6-13/32"	2-43/64"	5-11/32"	4-27/64"	1-1/4" GROOVE
1-1/4" (5/8" - 11.2)	1/4"	1-1/16"	6-13/32"	2-43/64"	5-11/32"	4-27/64"	1-1/4" GROOVE
1-1/4" (3/4" - 14)	1/4"	1-1/16"	6-13/32"	2-43/64"	5-11/32"	4-27/64"	1-1/4" GROOVE