

ENEXIA
PIPING INNOVATIONS



Product catalogue 2016



Industrial products
Specifications & instructions

NORDIflow®

Table of contents

NordicFlow® Thin Wall Pipes.....	1	Tipping Dowels.....	25
Rigid Grooved Couplings.....	2	Hex Bolts.....	25
Flexible Grooved Couplings.....	3	Hex Nuts.....	26
Grooved Mechanical Tees.....	4	Rod Couplings.....	26
Threaded Mechanical Tees.....	5-6	Tensilock Nuts.....	27
Grooved Elbows 90° and 45°.....	7	SN Quick Nuts.....	27
Grooved Elbows 22,5° and 11,25°.....	8	Channel Nuts.....	27
Grooved Tees and Reducing Tees.....	9	Press Fittings.....	28
Grooved End Caps.....	10	YN Couplings.....	28
Grooved Reducers.....	11	NordicFlow Roll Grooving Machine.....	29
Grooved Flange Adapters.....	12	Grooving Tool PACE 1039.....	29
Check Valves.....	13	Dry Cut Metal Saw AGP DRC 355.....	30
NF flexible sprinkler hoses.....	14	Reciprocating Saw AGP RS26.....	30
NF Butterfly Valves with sup. switch.....	15	Exact PipeCut 220E.....	31
Y-Strainers.....	16	Exact PipeCut 170.....	31
Grooved Butterfly Valves.....	17	Pipe Sander WS620.....	32
SS Grooved Couplings.....	18	Hole Cutting Drill HC127.....	32
SS Grooved Elbows 90° and 45°.....	19	Hole Saws.....	33
SS Grooved Tees and End Caps.....	20	Seats For Hole Saws.....	33
Beam Clamps.....	21	Pilot Drill.....	33
Concrete Screws with Female Thread.....	21	Jointing Lubricant.....	34
Ruspert Screws.....	21	Groove Tape.....	34
Threaded Rods.....	22	Center Punch.....	34
Consoles With Support.....	22	Installation - Grooved Couplings.....	35
Wedge Anchors.....	23	Installation - Mechanical Tees.....	37
L Anchors.....	23	Groove Dimensions.....	39
Z Anchors.....	23	Torque Specifications.....	40
Pipe Hangers.....	23	Size Table For Hole Saws.....	40
Loop Hangers.....	24	Notes.....	41-43
Push-in Anchors.....	24		

NordicFlow® Thin Wall Pipes

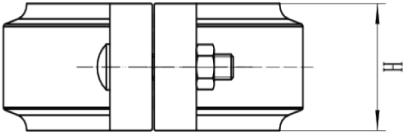
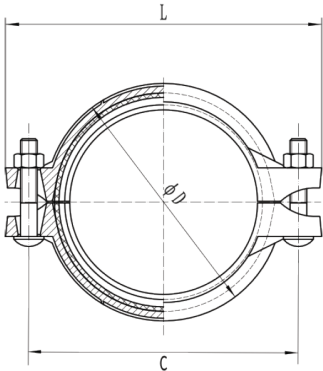


Product code 6 m	Product code 6m	DN	Size	Weight/m (galv)	Weight /pipe	Weight/m (painted)	Weight /pipe
Galvanized	Painted	mm	D x t mm	kg	6 m	kg	6m
NF-G-32	NF-EPOXY-32	32	42,4 x 2,0	2,1	12,6	2,0	12,0
NF-G-40	NF-EPOXY-40	40	48,3 x 2,0	2,4	14,4	2,3	13,8
NF-G-50	NF-EPOXY-50	50	60,3 x 2,0	3,0	18,0	2,9	17,4
NF-G-65	NF-EPOXY-65	65	76,1 x 2,0	3,9	23,4	3,7	22,2
NF-G-80	NF-EPOXY-80	80	88,9 x 2,0	4,5	27,0	4,3	25,8
NF-G-100	NF-EPOXY-100	100	114,3 x 2,3	6,7	40,2	6,4	38,4
NF-G-125	NF-EPOXY-125	125	139,7 x 2,9	10,3	61,8	9,8	58,8
NF-G-150	NF-EPOXY-150	150	168,3 x 2,9	13,6	81,6	13,0	78,0
NF-G-200	NF-EPOXY-200	200	219,1 x 3,6	20,1	120,3	19,1	114,6

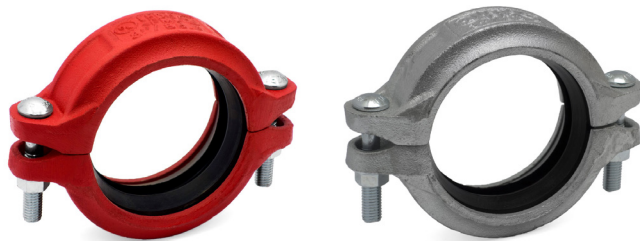
Rigid Grooved Couplings



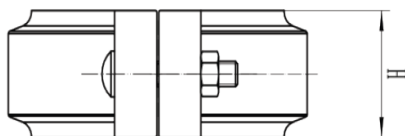
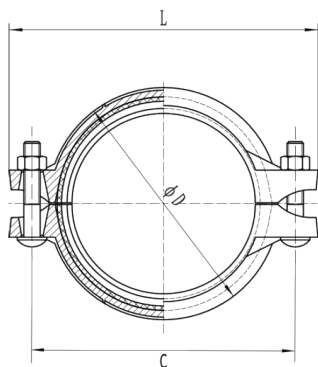
Product code		Size	DN	Dimensions (mm)			Bolt	Socket	Torque
Painted	Galvanized	mm	mm	ØD	L	H	(d1 x L)	mm	Nm
GKSR11/4	GKSG11/4	42,4	32	63,5	107,5	45	M10*50	15	60 ~ 70
GKSR11/2	GKSG11/2	48,3	40	69	114	45	M10*50	15	60 ~ 70
GKSR2	GKSG2	60,3	50	83,6	124	46	M10*60	15	60 ~ 70
GKSR21/2	GKSG21/2	76,1	65	98	139	46	M10*60	15	60 ~ 70
GKSR3	GKSG3	88,9	80	114	156	46	M10*60	15	60 ~ 70
GKSR4	GKSG4	114,3	100	142	189	50	M12*70	18	90 ~ 100
GKSR5	GKSG5	139,7	125	170	222	50	M12*70	18	90 ~ 100
GKSR6	GKSG6	168,3	150	198	251	50	M12*70	18	90 ~ 100
GKSR8	GKSG8	219,1	200	260	322	58	M16*85	24	200 ~ 230



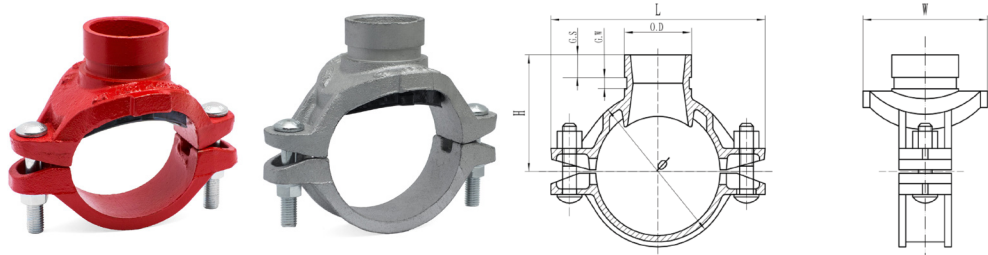
Flexible Grooved Couplings



Product code		Size	DN	Dimensions (mm)			Bolt	Socket	Torque
Painted	Galv.	mm	mm	ØD	L	H	(d1 x L)	mm	Nm
GKFR11/4	GKSG11/4	42,4	32	63,5	107,5	45	M10*50	15	60 ~ 70
GKFR11/2	GKSG11/2	48,3	40	69	114	45	M10*50	15	60 ~ 70
GKFR2	GKSG2	60,3	50	83,6	124	46	M10*60	15	60 ~ 70
GKFR21/2	GKSG21/2	76,1	65	98	139	46	M10*60	15	60 ~ 70
GKFR3	GKSG3	88,9	80	114	156	46	M10*60	15	60 ~ 70
GKFR4	GKSG4	114,3	100	142	189	50	M12*70	18	90 ~ 100
GKFR5	GKSG5	139,7	125	170	222	50	M12*70	18	90 ~ 100
GKFR6	GKSG6	168,3	150	198	251	50	M12*70	18	90 ~ 100
GKFR8	GKSG8	219,1	200	260	322	58	M16*85	24	200 ~ 230

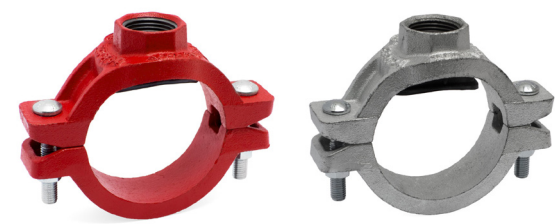


Grooved Mechanical Tees

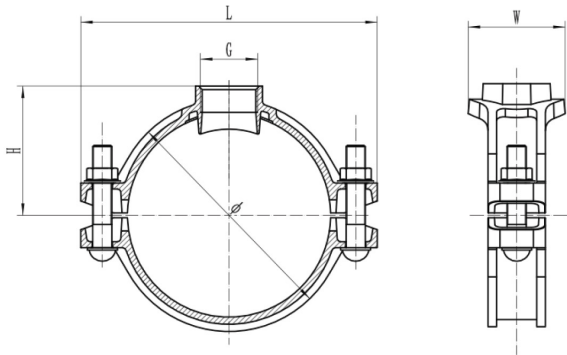


Product code		D	DN	Dimensions (mm)				Hole saw	Bolt size	Torque
Painted	Galvanized	mm	mm	L	H	W	Ø	mm	(d1 x L)	Nm
GMGR2-11/4	GMGG2-11/4	60,3x42,4	50-32	120	70	83	85	46+1	M10*50	60-70
GMGR2-11/2	GMGG2-11/2	60,3x48,3	50-40	120	70	83	85	46+1	M10*50	60-70
GMGR21/1-11/4	GMGG21/1-11/4	76,1x42,4	65-32	139	73	83	100	46+1	M10*60	60-70
GMGR21/2-11/2	GMGG21/2-11/2	76,1x48,3	65-40	139	75	90	100	53+1	M10*60	60-70
GMGR3-11/4	GMGG3-11/4	88,9x42,4	80-32	155	82	83	113	46+1	M10*60	60-70
GMGR3-11/2	GMGG3-11/2	88,9x48,3	80-40	155	82	90	113	53+1	M10*60	60-70
GMGR3-2	GMGG3-2	88,9x60,3	80-50	155	82	100	113	64+1	M10*60	60-70
GMGR4-11/4	GMGG4-11/4	114,3x42,4	100-32	181	95	83	140	46+1	M12*70	90-100
GMGR4-11/2	GMGG4-11/2	114,3x48,3	100-40	181	95	90	140	53+1	M12*70	90-100
GMGR4-2	GMGG4-2	114,3x60,3	100-50	181	95	100	140	64+1	M12*70	90-100
GMGR4-21/2	GMGG4-21/2	114,3x76,1	100-65	181	95	117	140	80+1	M12*70	90-100
GMGR4-3	GMGG4-3	114,3x88,9	100-80	181	95	129	140	92+1	M12*70	90-100
GMGR5-2	GMGG5-2	139,7x60,3	125-50	212	109	100	167	64+1	M12*75	90-100
GMGR5-21/2	GMGG5-21/2	139,7x76,1	125-65	212	109	117	167	80+1	M12*75	90-100
GMGR6-11/4	GMGG6-11/4	168,3x42,4	150-32	248	121	72	194	46+1	M16*85	200-230
GMGR6-11/2	GMGG6-11/2	168,3x48,3	150-40	248	121	79	194	53+1	M16*85	200-230
GMGR6-2	GMGG6-2	168,3x60,3	150-50	239	121	100	196	64+1	M14*85	135-150
GMGR6-21/2	GMGG6-21/2	168,3x76,1	150-65	239	121	117	196	80+1	M14*85	135-150
GMGR6-3	GMGG6-3	168,3x88,9	150-80	239	121	129	196	92+1	M14*85	135-150
GMGR6-4	GMGG6-4	168,3x114,3	150-100	239	122	153	196	111+1	M14*85	135-150
GMGR8-21/2	GMGG8-21/2	219,1x76,1	200-65	311	147	117	248	80+1	M16*85	200-230
GMGR8-3	GMGG8-3	219,1x88,3	200-80	311	147	129	248	92+1	M16*85	200-230

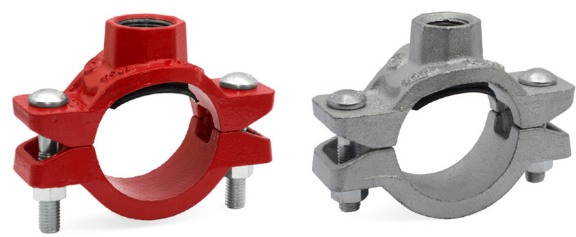
Threaded Mechanical Tees



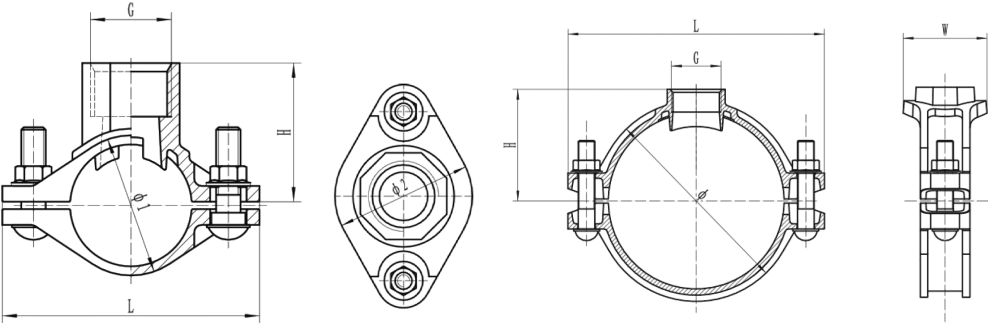
Product code		D	DN	Dimensions (mm)				Hole saw	Bolt size	Torque
Painted	Galvanized	mm	mm	L	H	W	Ø	mm	(d1 x L)	Nm
GMDR2-11/4	GMDG2-11/4	60,3x42,4	50-32	120	55	72	85	46+1	M10*50	60-70
GMDR2-11/2	GMDG2-11/2	60,3x48,3	50-40	120	63	72	85	46+1	M10*50	60-70
GMDR21/2-11/4	GMDG21/2-11/4	76,1x42,4	65-32	139	72	72	99	46+1	M10*60	60-70
GMDR21/2-11/2	GMDG21/2-11/2	76,1x48,3	65-40	139	60	79	99	53+1	M10*60	60-70
GMDR3-1	GMDG3-1	88,9x33,7	80-25	155	67	64	113	38+1	M10*60	60-70
GMDR3-11/4	GMDG3-11/4	88,9x42,4	80-32	155	67	72	113	46+1	M10*60	60-70
GMDR3-11/2	GMDG3-11/2	88,9x48,3	80-40	155	67	79	113	53+1	M10*60	60-70
GMDR3-2	GMDG3-2	88,9x60,3	80-50	155	67	90	113	64+1	M10*60	60-70
GMDR4-1	GMDG4-1	114,3x33,7	100-25	181	79	64	139	38+1	M12*70	90-100
GMDR4-11/4	GMDG4-11/4	114,3x42,4	100-32	181	79	72	139	46+1	M12*70	90-100
GMDR4-11/2	GMDG4-11/2	114,3x48,3	100-40	181	79	79	139	53+1	M12*70	90-100
GMDR4-2	GMDG4-2	114,3x60,3	100-50	181	79	90	139	64+1	M12*70	90-100
GMDR6-11/4	GMDG6-11/4	168,3x42,4	150-32	248	106	83	196	46+1	M14*85	135-150
GMDR6-11/2	GMDG6-11/2	168,3x48,3	150-40	248	106	90	196	53+1	M14*85	135-150
GMDR6-2	GMDG6-2	168,3x60,3	150-50	239	106	100	196	64+1	M14*85	135-150



Threaded Mechanical Tees



Product code		D	DN	Dimensions (mm)				Hole saw	Bolt size	Torque
Painted GSTFCR-	Galvanized GSTFCG-	mm	mm	L	H	Ø1	Ø2	mm	(d1 x L)	Nm
11/4 - 1/2	11/4 - 1/2	42,4 x 21,6	32-15	98	45	52	65	30+1	M10*40	60-70
11/4 - 13/4	11/4 - 13/4	42,4 x 26,9	32-20	98	45	52	65	30+1	M10*40	60-70
11/4 - 1	11/4 - 1	42,4 x 33,7	32-25	98	54	52	65	30+1	M10*40	60-70
11/2 - 1/2	11/2 - 1/2	48,3 x 21,6	40-15	105,6	48	57,5	65	30+1	M10*40	60-70
11/2 - 13/4	11/2 - 13/4	48,3 x 26,9	40-20	105,6	48	57,5	65	30+1	M10*40	60-70
11/2 - 1	11/2 - 1	48,3 x 33,7	40-25	105,6	57	57,5	65	30+1	M10*40	60-70
2 - 1/2	2 - 1/2	60,3 x 21,3	50-15	120	53	76	56	30+1	M10*50	60-70
2 - 13/4	2 - 13/4	60,3 x 26,9	50-20	120	54	76	56	30+1	M10*50	60-70
2 - 1	2 - 1	60,3 x 33,7	50-25	120	45	76	56	38+1	M10*40	60-70
21/2 - 1/2	21/2 - 1/2	76,1 x 21,6	65-15	139	61	93	56	30+1	M10*60	60-70
21/2 - 13/4	21/2 - 13/4	76,1 x 26,9	65-20	139	62	93	56	30+1	M10*60	60-70
21/2 - 1	21/2 - 1	76,1 x 33,7	65-25	139	60	93	56	38+1	M10*60	60-70

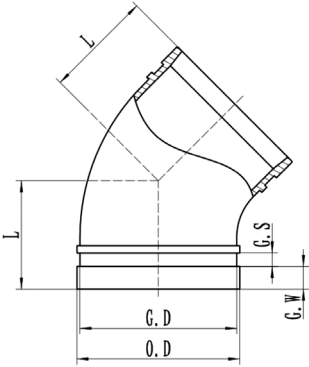
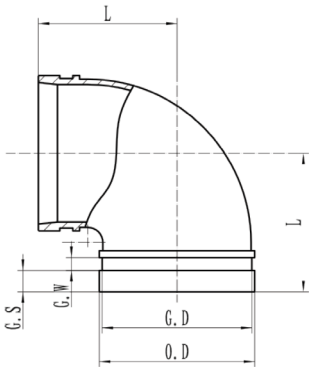


Grooved Elbows 90° and 45°



Product code		D	DN	L
Painted	Galvanized	mm	mm	mm
GB90R11/4	GB90G11/4	42,4	32	70
GB90R11/2	GB90G11/2	48,3	40	70
GB90R2	GB90G2	60,3	50	70
GB90R21/2	GB90G21/2	76,1	65	76
GB90R3	GB90G3	88,9	80	85
GB90R4	GB90G4	114,3	100	102
GB90R5	GB90G5	139,7	125	121
GB90R6	GB90G6	168,3	150	140
GB90R8	GB90G8	219,1	200	175

Product code		D	DN	L
Painted	Galvanized	mm	mm	mm
GB45R11/4	GB45G11/4	42,4	32	45
GB45R11/2	GB45G11/2	48,3	40	45
GB45R2	GB45G2	60,3	50	51
GB45R21/2	GB45G21/2	76,1	65	62
GB45R3	GB45G3	88,9	80	70
GB45R4	GB45G4	114,3	100	76
GB45R5	GB45G5	139,7	125	83
GB45R6	GB45G6	168,3	150	89
GB45R8	GB45G8	219,1	200	108



Grooved Elbows 22,5° and 11,25°



Product code		O.D.	DN	L
Painted	Galvanized	mm	mm	mm
171120012002	-	42,4	32	45

171120015002	-	48,3	40	45
--------------	---	------	----	----

171120020002	171120020003	60,3	50	47,5
--------------	--------------	------	----	------

171120029002	17112003003	76,1	65	51
--------------	-------------	------	----	----

171120030002	171120030003	88,9	80	57
--------------	--------------	------	----	----

171120045002	171120045003	114,3	100	67
--------------	--------------	-------	-----	----

171120052002	-	139,7	125	73
--------------	---	-------	-----	----

171120065002	171120065003	168,3	150	79
--------------	--------------	-------	-----	----

171120085002	-	219,1	200	98,5
--------------	---	-------	-----	------

Product code		O.D.	DN	L
Painted	Galvanized	mm	mm	mm
171130012002	-	42,4	32	35

171130015002	-	48,3	40	35
--------------	---	------	----	----

171130020002	-	60,3	50	35
--------------	---	------	----	----

171130029002	171130029003	76,1	65	38
--------------	--------------	------	----	----

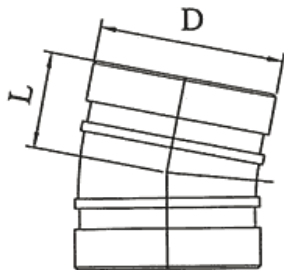
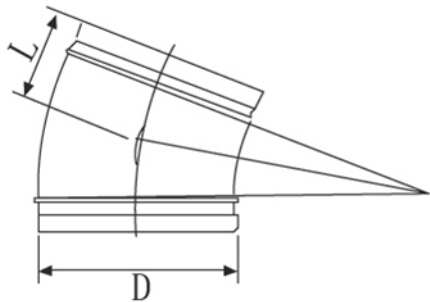
171130030002	171130030003	88,9	80	38
--------------	--------------	------	----	----

171130045002	171130045003	114,3	100	38
--------------	--------------	-------	-----	----

171130052002	-	139,7	125	44
--------------	---	-------	-----	----

17113005002	171130065003	168,3	150	44
-------------	--------------	-------	-----	----

171130085002	-	219,1	200	51
--------------	---	-------	-----	----

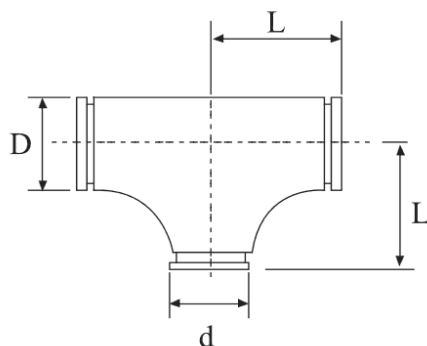
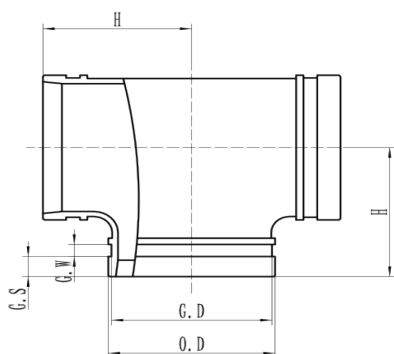


Grooved Tees and Reducing Tees

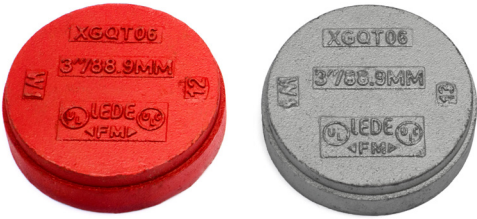


Product code		O.D.	DN	H
Painted	Galvanized	mm	mm	mm
GTR11/4	GTG11/4	42,4	32	70
GTR11/2	GTG11/2	48,3	40	70
GTR2	GTG2	60,3	50	70
GTR21/2	GTG21/2	76,1	65	76
GTR3	GTG3	88,9	80	85
GTR4	GTG4	114,3	100	102
GTR5	GTG5	139,7	125	121
GTR6	GTG6	168,3	150	140
GTR8	GTG8	219,1	200	175

Product code		D x d	DN	L
Painted	Galvanized	mm	mm	mm
9249712	-	76,1 x 60,3	65x 50	90
9249716	-	114,3 x 60,3	100x 50	104
9249717	-	114,3 x 76,1	100x 65	104
9249718	-	114,3 x 88,9	100x 80	104
9249725	-	168,3 x 88,9	150x 80	142
9249726	-	168,3 x 114,3	150x 100	142
9249729	-	219,1 x 168,3	200x 150	179

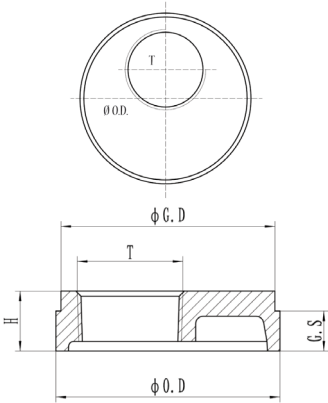
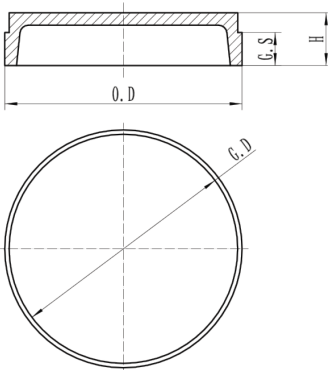


End Caps and End Caps With Threaded Outlet

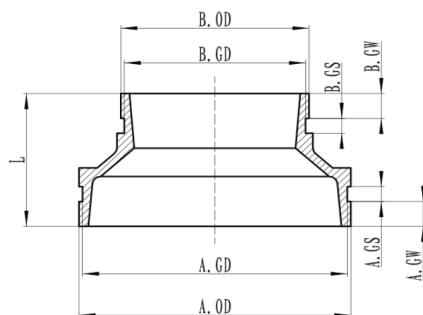


Product code		O.D.	DN	H
Painted	Galvanized	mm	mm	mm
GER11/4	GEG11/4	42,4	32	24
GER11/2	GEG11/2	48,3	40	24
GER2	GEG2	60,3	50	24
GER21/2	GEG21/2	76,1	65	27
GER3	GEG3	88,9	80	27
GER4	GEG4	114,3	100	27
GER5	GEG5	139,7	125	27
GER6	GEG6	168,3	150	27
GER8	GEG8	219,1	200	32

Product code		O.D.	DN	H
Painted	Galvanized	mm	mm	mm
GER2-11/4	GEG2-11/4	60,3-48,3	50-40	24
GER21/2-2	GEG21/2-2	76,1-60,3	65-50	24
GER3-2	GEG3-2	88,9-60,3	80-50	24
GER4-2	GEG4-2	114,3-60,3	100-50	25
GER5-2	GEG5-2	139,7-60,3	125-50	25
GER6-2	GEG6-2	168,3-60,3	150-50	25
GER8-2	GEG8-2	219,1-60,3	200-50	28

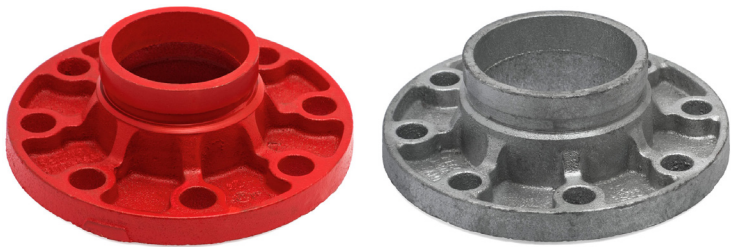


Grooved Reducers

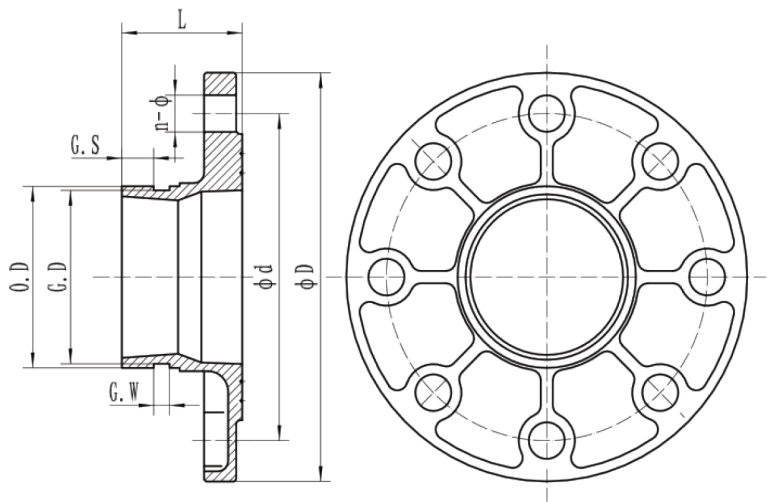


Product code		O.D. (AxB)	DN	Length (mm)
Painted	Galvanized	mm	mm	L
GRCR2-11/2	GRCG2-11/2	60,3x48,3	50-40	64
GRCR21/2-11/2	GRCG212-11/2	76,1x48,3	65-40	64
GRCR21/2-2	GRCG21/2-2	76,1x60,3	65-50	64
GRCR3-2	GRCG3-2	88,9x60,3	80-50	64
GRCR3-21/2	GRCG3-21/2	88,9x76,1	80-65	64
GRCR4-2	GRCG4-2	114,3x60,3	100-50	76
GRCR4-21/2	GRCG4-21/2	114,3x76,1	100-65	76
GRCR4-3	GRCG4-3	114,3x88,9	100-80	76
GRCR5-2	GRCG5-2	139,7x60,3	125-50	85
GRCR5-21/2	GRCG5-21/2	139,7x76,1	125-65	85
GRCR5-3	GRCG5-3	139,7x88,9	125-80	85
GRCR5-4	GRCG5-4	139,7x114,3	125-100	85
GRCR6-3	GRCG6-3	168,3x88,9	150-80	85
GRCR6-4	GRCG6-4	168,3x114,3	150-100	85
GRCR6-5	GRCG6-5	168,3x139,7	150-125	85
GRCR8-6	GRCG8-6	219,1x168,3	200-150	85

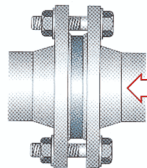
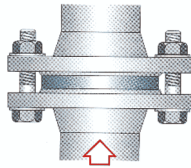
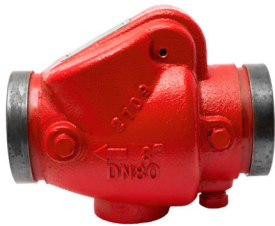
Grooved Flange Adapters



Product code		O.D.	DN	Dimensions (mm)			
Painted	Galvanized	mm	mm	n x Ø	Ød	ØD	L
GAF16R2	GAF16G2	60,3	50	4 x 18	125	165	60
GAF16R21/2	GAF16G21/2	76,1	65	4 x 18	145	185	60
GAF16R3	GAF16G3	88,9	80	8 x 18	160	200	60
GAF16R4	GAF16G4	114,3	100	8 x 18	180	220	60
GAF16R5	GAF16G5	139,7	125	8 x 18	210	250	65
GAF16R6	GAF16G6	168,3	150	8 x 22	240	285	65
GAF16R8	GAF16G8	219,1	200	12 x 22	295	340	70



Grooved Check Valves and Wafer Swing Check Valves



Product code	O.D. (mm)	DN (mm)	A (mm)
VCG01-060	60,3	50	169

VCG01-076	76,1	65	183
VCG01-089	88,9	80	198

VCG01-114	114,3	100	218
-----------	-------	-----	-----

VCG01-168	168,3	150	270
-----------	-------	-----	-----

VCG01-219	219,1	200	325
-----------	-------	-----	-----

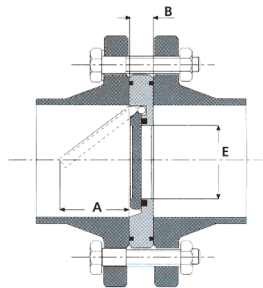
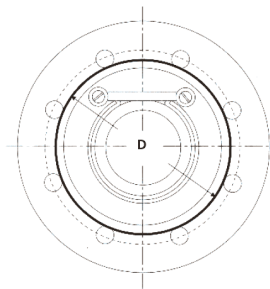
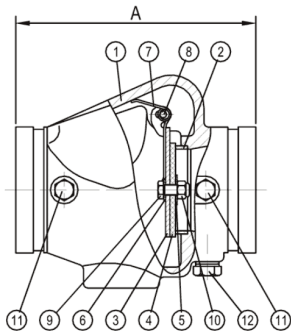
Product code	O.D. (mm)	DN (mm)	A (mm)	D (mm)	E (mm)	B (mm)
TI-LAPPA-65	76,1	65	48	129	40	14

TI-LAPPA-80	88,9	80	60	144	54	14
TI-LAPPA-100	114,3	100	78	164	70	18

TI-LAPPA-150	168,3	150	117	220	112	20
--------------	-------	-----	-----	-----	-----	----

TI-LAPPA-200	219,1	200	160	275	154	22
--------------	-------	-----	-----	-----	-----	----

TI-LAPPA-250	273,3	250	200	332	200	26
--------------	-------	-----	-----	-----	-----	----



Nordic Flow Flexible sprinkler hoses



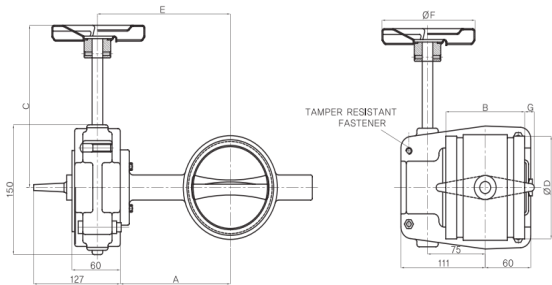
Product code	Description	Lenght (mm)
NF-LETKU-700	NordicFlow flexible sprinkler hose 700 mm ½"	700
NF-LETKU-700-P	NordicFlow flexible sprinkler hose 700 mm ½" Braided	700
NF-LETKU-1000	NordicFlow flexible sprinkler hose 1000 mm ½"	1000
NF-LETKU-1000-P	NordicFlow flexible sprinkler hose 1000 mm ½" Braided	1000
NF-LETKU-1000-20	NordicFlow flexible sprinkler hose 1000 mm ¾"	1000
NF-LETKU-1200	NordicFlow flexible sprinkler hose 1200 mm ½"	1200
NF-LETKU-1200-P	NordicFlow flexible sprinkler hose 1200 mm ½" Braided	1200



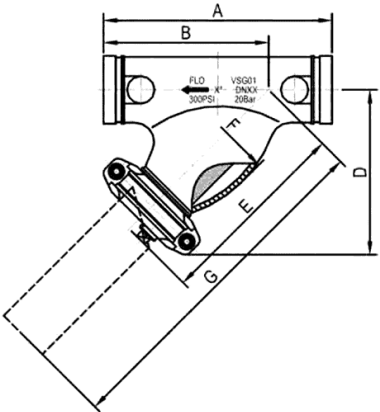
Butterfly Valves with Supervisory Switch



Product code	DN (mm)	A	B	C	D	E	F	G	Weight (kg)
GSP-GRO-50	50	114	60,3	57,1	15,8	7,9	50	65	2,2
GSP-GRO-65	65	105	96,4	135	73,1	135	125	–	8,2
GSP-GRO-80	80	112	96,4	135	88,9	142	125	–	9
GSP-GRO-100	100	145	115,4	135	114,3	175	125	–	10,7
GSP-GRO-125	125	–	132,4	–	139,7	–	–	–	14,4
GSP-GRO-150	150	179	132,4	193	168,3	209	225	6,8	15,2
GSP-GRO-200	200	204	147	193	219,1	234	225	24,2	20,4
GSP-GRO-250	250	250	159	208	273	282	283	41,8	31,4
GSP-GRO-300	300	278	165	208	323,9	310	283	58,5	34,3



Grooved Y-Strainers

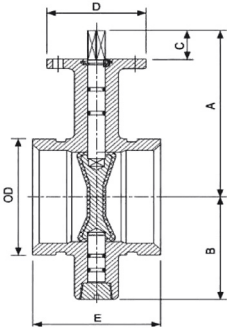


Product code	Dimensions (mm)								Plug (")	Filter hole size
	O.D.	DN	A	B	D	E	F	G		
VSG01-60	50	60,3	248	178	178	217	89	345	½	8 mm
VSG01-76	65	76,1	273	197	200	237	105	382	½	8 mm
VSG01-88	80	88,9	299	216	216	258	121	413	¼	8 mm
VSG01-114	100	114,3	362	267	276	323	159	541	1	8 mm
VSG01-168	150	168,3	470	356	353	408	235	676	1¼	8 mm
VSG01-219	200	219,1	610	457	451	516	315	866	1½	8 mm

Optional filter screens

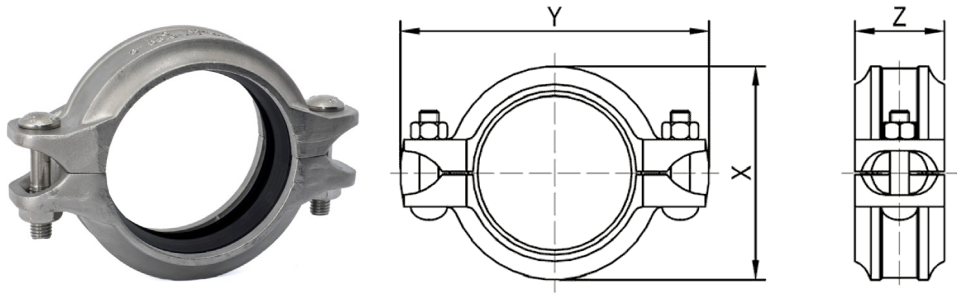
Product code	DN (mm)	Filter hole size
FILTERSCREEN50	50	1,6 mm
FILTERSCREEN65	65	1,6 mm
FILTERSCREEN80	80	3,2 mm
FILTERSCREEN100	100	3,2 mm
FILTERSCREEN150	150	3,2 mm
FILTERSCREEN200	200	3,2 mm

Butterfly Valves



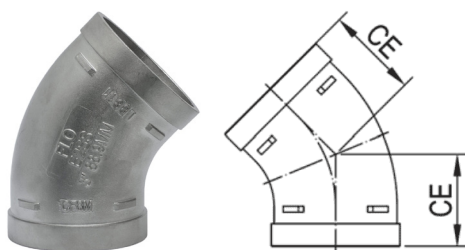
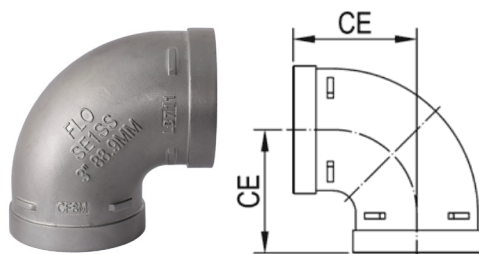
Product code	DN (mm)	O.D. (mm)	E (mm)	D (mm)	A (mm)	B (mm)
1V30N0020001	50	60,3	84	90	130	77
1V30N0029001	65	76,1	97	90	142	85
1V30N0030001	80	88,9	97	90	147	90
1V30N0045001	100	114,3	116	90	177	108
1V30N0052001	125	139,7	148	90	171	120
1V30N0052001	150	168,3	148	90	213	145
1V30N0054001	200	219,1	133	125	231	180

Stainless Steel Grooved Couplings



Product code	DN (mm)	D (mm)	Gap between pipe ends (mm)	X (mm)	Y (mm)	Z (mm)	Bolt size
RC1SS-033	25	33,7	0-2,2	54	100	44	M10x50
RC1SS-042	32	42,4	0-2,2	62	108	44	M10x50
RC1SS-048	40	48,3	0-2,2	68	114	44	M10x50
RC1SS-060	50	60,3	0-2,2	81	128	45	M10x50
RC1SS-076	65	76,1	0-2,2	98	144	46	M10x50
RC1SS-089	80	88,9	0-2,6	111	161	47	M10x50
RC1SS-114	100	114,3	0-2,6	140	189	48	M10x60
RC1SS-140	125	139,7	0-2,6	167	227	49	M12x70
RC1SS-168	150	168,3	0-2,6	197	256	49	M12x70
RC1SS-219	200	219,1	0-4,9	254	322	59	M16x90
RC1SS-273	250	273	0-4,9	310	378	59	M20x100
RC1SS-324	300	323,9	0-4,9	363	430	59	M20x100

Stainless Steel Grooved Elbows 90° and 45°



Product code	DN (mm)	D (mm)	CE (mm)
E1SS-033	25	33,7	57

E1SS-042	32	42,4	70
E1SS-048	40	48,3	70

E1SS-060	50	60,3	70
E1SS-076	65	76,1	76

E1SS-089	80	88,9	86
E1SS-114	100	114,3	102

E1SS-140	125	139,7	124
E1SS-168	150	168,3	140

E1SS-219	200	219,1	173
E1SS-273	250	273	229

E1SS-324	300	323,9	254
----------	-----	-------	-----

Product code	DN (mm)	D (mm)	CE (mm)
E2SS-033	25	33,7	44

E2SS-042	32	42,4	44
E2SS-048	40	48,3	44

E2SS-060	50	60,3	51
E2SS-076	65	76,1	57

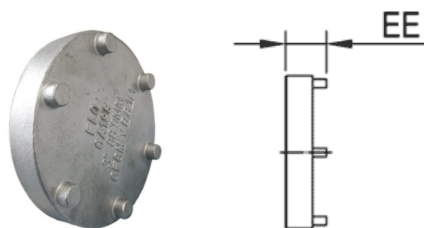
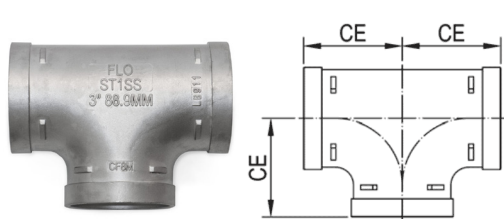
E2SS-89	80	88,9	64
E2SS-114	100	114,3	76

E2SS-140	125	139,7	83
E2SS-168	150	168,3	89

E2SS-219	200	219,1	108
E2SS-273	250	273	121

E2SS-324	300	323,9	133
----------	-----	-------	-----

Stainless Steel Grooved Tees and End Caps



Product code	DN (mm)	D (mm)	CE (mm)
T1SS-033	25	33,7	57

T1SS-042	32	42,4	70
----------	----	------	----

T1SS-048	40	48,3	70
----------	----	------	----

T1SS-060	50	60,3	70
----------	----	------	----

T1SS-076	65	76,1	76
----------	----	------	----

T1SS-089	80	88,9	86
----------	----	------	----

T1SS-114	100	114,3	102
----------	-----	-------	-----

T1SS-140	125	139,7	124
----------	-----	-------	-----

T1SS-168	150	168,3	140
----------	-----	-------	-----

T1SS-219	200	219,1	173
----------	-----	-------	-----

T1SS-273	250	273	229
----------	-----	-----	-----

T1SS-324	300	323,9	254
----------	-----	-------	-----

Product code	DN (mm)	D (mm)	EE (mm)
CA1SS-033	25	33,7	22

CA1SS-042	32	42,4	22
-----------	----	------	----

CA1SS-048	40	48,3	22
-----------	----	------	----

CA1SS-060	50	60,3	22
-----------	----	------	----

CA1SS-076	65	76,1	22
-----------	----	------	----

CA1SS-089	80	88,9	22
-----------	----	------	----

CA1SS-114	100	114,3	24
-----------	-----	-------	----

CA1SS-140	125	139,7	24
-----------	-----	-------	----

CA1SS-168	150	168,3	24
-----------	-----	-------	----

CA1SS-219	200	219,1	29
-----------	-----	-------	----

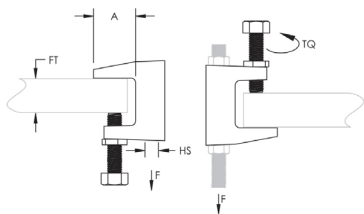
CA1SS-273	250	273	29
-----------	-----	-----	----

CA1SS-324	300	323,9	29
-----------	-----	-------	----

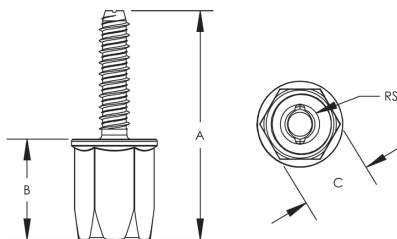
Beam Clamps



Product code	Size HS	Max. FT (mm)	A (mm)	Torque TQ (Nm)
3230280	M8	18	21	14
3230282	M10	20	23	14
3230284	M12	26	35	14



Concrete Screws with Female Thread



Product code	Size RS	A (mm)	B (mm)	C (mm)	Hole diameter (mm)	Drill depth (mm)
390009	M8	72	32	22	8	50

390010	M10	72	32	22	8	50
--------	-----	----	----	----	---	----

Ruspert Screws



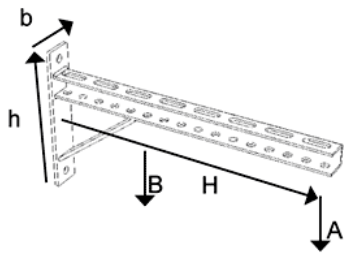
Product code	Size (mm)	Flange (mm)	Wrench size (mm)	Pre-hole ø (mm)	Torx
115052675045	7,5×45	17	13	6	T-40

Threaded Rods



Product code	Size (mm)	Length (mm)	Surface treatment
R01-M8	M8	2000	Z/P
R01-M10	M10	2000	Z/P
R01-M16	M16	2000	Z/P
R01-M20	M20	2000	Z/P

Consoles With Support



Product code	H (mm)	Size (mm)	h (mm)	b (mm)	Hole c/c (mm)	Hole ø (mm)	Surface treatment
3231122	250	30x30x30x3	180	40	140	17x12	KZN
3231124	400	30x30x30x3	180	40	140	17x12	KZN
3231125	500	30x30x30x3	180	40	140	17x12	KZN

3231130	600	30x30x30x3	180	40	70	13	KZN
---------	-----	------------	-----	----	----	----	-----

Wedge Anchors



Product code	Size
11500108050	M8x50
11500110070	M10x70

Pipe Hangers



Product code	DN
3227004	20
3227006	25
3227008	30
3227010	40
3227012	50
3227014	65
3227016	80
3227018	100
3227711	125
3227712	150
3227713	200

L Anchors



Product code	Size	Length (mm)	Hole Ø (mm)	Surface treatment
KA-L-RA-4X30	4x30	50	11	Z/P
KA-L-RA-4X40	4x40	50	11	Z/P
KA-L-RA-6X40	6x40	60	14	Z/P
KA-L-RA-8X50	8x50	85	18	Z/P

Z Anchors



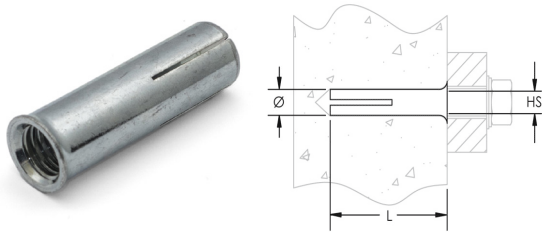
Product code	Size	Hole Ø (mm)	Surface treatment
KA-Z-RA-4x30	30×4	11	Z/P
KA-Z-RA-4x40	40×4	11	Z/P
KA-Z-RA-6x40	40×6	14	Z/P
KA-Z-RA-8x50	50×8	17	Z/P

Loop Hangers



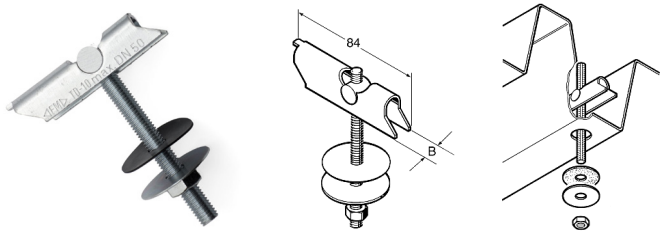
Product code	DN	Product code	DN	Surface treatment
CL01-025V	25	CL01-80	80	ZnP.
CL01-032V	30	CL01-100	100	ZnP.
CL01-040V	40	CL01-125	125	ZnP.
CL01-050V	50	CL01-150	150	ZnP.
CL01-065V	65	CL01-200	200	ZnP.

Push-in Anchors



Product code	Hole size HS	Length L (mm)	D Ø (mm)
115011080	M8	30	10
115011100	M10	40	12
115011120	M12	50	15

Tipping Dowels



Product code	Size	Threaded rod length (mm)	Hole ø (mm)	B (mm)
587108	M8x100	100	22	14
587208	M8x200	200	22	14
587100	TD M10x100	100	25	16
587210	TD M10x200	200	25	16

Hex Bolts



Product code	Size (mm)	Length (mm)	Wrench size (mm)	Surface treatment
1111116070	M16	70	24	ZN
1111116130	M16	130	24	ZN
1111120080	M20	80	30	ZN
1111120150	M20	150	30	ZN

Hex Nuts



Product code	Size (mm)	Height (mm)	Wrench size (mm)	Surface treatment
13011080	M8	6,5	13	Z/P
13011100	M10	8	17	Z/P
13011120	M12	10	19	Z/P
13011160	M16	13	24	Z/P
13011200	M20	16	30	Z/P

Rod Couplings



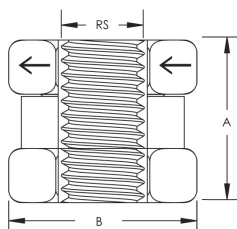
Product code	Size (mm)	Height (mm)	Wrench size (mm)	Surface treatment
1323108030	M8	30	13	FZB
1323110040	M10	40	17	FZB
1323112050	M12	50	19	FZB
1323116050	M16	50	24	FZB
1323120050	M20	50	30	FZB

Tensilock Nuts



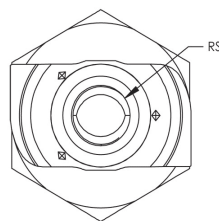
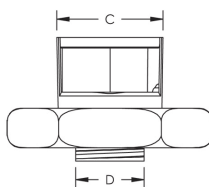
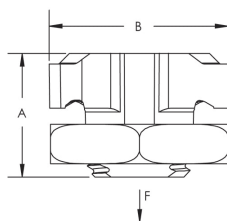
Product code	Size (mm)	Height (mm)	Wrench size (mm)	Flange diam-ter(mm)
13296080	M8	8	13	17,9
13296100	M10	10	15	21,8
13296120	M12	12	18	26

SN Quick Nuts



Product code	Size (mm)	A (mm)	B (mm)
390006	M8	19	22
390007	M10	19	22

Channel Nuts



Product code	Size (mm)	A (mm)	B (mm)	C (mm)	D(mm)
390003	M8	23	35	19,5	13,5
390004	M10	23	35	19,5	13,5

Press Fittings



We have a large selection of Steelpres VdS-FM press fittings and pipes in stock. We can also offer Inoxpres press fittings, Isopres insulators and Novopress pressing units. See our website for more information.

YN Couplings



Straub-type YN Couplings are easy and fast to install without special tools. Couplings do not require grooving or threading of the pipe and it is possible to even join together pipes from different materials. Hinged couplings are suitable to be used with new mountings as well as during repair works. See our website for more information.

NordicFlow Roll Grooving Machine



Technical specifications	
Product code	TO-TUWEI-VIA
Pipe diameter	33-325 mm
Wall thickness	3-10 mm
Max. working pressure	9300 kg
Max. oil cylinder pressure	30 Mpa
Oil cylinder capacity	150 ml
RMP	36 rpm
Voltage	230 V
Power	1500 W
Dimensions (BxDxH)	1400 mm x 760 mm x 1060 mm
Weight	206 kg

Roll Grooving Tool PACE 1039 Mini-Mite



Technical specifications	
Product code	TO-PACE-1039
Weight	8,6 kg
Capacity	11¼"-6" (DN32-DN150) Schedule 40 or thin-walled steel pipe
Required tools	Included multi-function Ratchet Action Hand Crank is all you need
Ratchet Action Hand Crank	15/16"

Compatibility	Ridgid 300 or equivalent
---------------	--------------------------

Dry Cut Metal Saw DRC 355



Technical specifications	
Product code	To-AGP-SAHA-355
Power	2200W
Voltage	220-240V~ 50-60Hz
No-load RPM	1300 RPM
Blade mounting bore	25.4mm (1")
Blade diameter	355mm
Soft start	Yes
Dimensions	680mm x 360mm x 580mm
Weight	23.5 kg

Reciprocating Saw RS26



Technical specifications	
Product code	TO-AGP-PUUKKOSAHA
Power	1500W
Voltage	220-240V~ 50-60Hz
No-load RPM	1000-2100 RPM
Max. capacity	153mm
Stroke length	26mm
Overload protection	Yes
Rpm regulator	Yes
Soft start	Yes
Dimensions	491 x 94 x 108mm
Weight	4,35 kg

Exact PipeCut 220E



Technical specifications

Product code	TO-EC200
Voltage/power	230V / 1200W
No-load RPM	1600 – 3500 r/min
Blade diameter	140mm
Blade mounting bore	62mm
Weight	6,0 kg
Range of use Ø	15mm – 220mm
Max wall thickness	6 mm steel, 14 mm plastic
Adjustment unit	Speed preselection, overload protection, soft start, torque control
Suitable for materials	Steel, copper, cast iron, stainless steel, acid proof steel, multi-layered materials and all plastics

Exact PipeCut 170



Technical specifications

Product code	TO-EC170
Voltage/power	230V / 1010W
No-load RPM	4000 r/min
Blade diameter	140mm
Blade mounting bore	62mm
Weight	5,7 kg
Range of use Ø	15mm – 170mm
Max wall thickness	6 mm steel, 14 mm plastic

Pipe Sander WS620



Technical specifications	
Product code	TO-AGP-WS620
Power	1500W
Voltage	220-240V~ 50-60Hz
No-load RPM	2300 – 6500 RPM
Sanding belt speed	15-28 m/s
Max. lenkin koko	620mm x 40mm
Dimensions	601mm x 220mm x 182mm
Soft start	Yes
Weight	5,3 kg

Hole Cutting Drill HC127



Technical specifications	
Product code	TO-AGP-PORA-HC127
Power	1100W
Voltage	220-240V 50-60Hz
No-load RPM	130 RPM
Max cutting capacity	127 mm
Pipe mounting capacity	32 mm – 203 mm
	1 mm -16 mm
Overload protection	Yes
Dimensions (LxBxH)	319 mm x 270 mm x 302 mm
Weight	15.33 kg

Hole Saws



Product code	D (mm)	RPM	Product code	D (mm)	RPM
NFHSS25	25	175	NFHSS57	57	70
NFHSS30	30	145	NFHSS64	64	65
NFHSS32	32	140	NFHSS67	67	65
NFHSS38	38	115	NFHSS70	70	60
NFHSS44	45	95	NFHSS79	79	55
NFHSS46	46	95	NFHSS89	89	30
NFHSS51	51	85	NFHSS92	92	45
NFHSS52	52	80	NFHSS111	111	40
NFHSS54	54	75	NFHSS114	114	35

Seats for Hole Saws



Product code	Size	Item name
NFHSSA3/8	14-30 mm	Small arbor 3/8" with HSS pilot drill 14 – 30 mm
NFHSSA7/16	32-168 mm	Big arbor 7/16" with HSS pilot drill 32 mm ->

Pilot Drill



Product code	Size	Item name
NFHSSA6.35	6,3 mm	HSS pilot drill

Jointing Lubricant



Properties	
Product code	G-LUBRICANT
Appearance at room temp.	Soft amber gel
Solids content*	Typically 15-30%
pH 10%	Typically 10
Tiheids 20°C	Typically 1.0

* Based on moisture analyzer at 130°C

Groove Tape



Groove tape is a tool used for controlling the groove depth after grooving and before pipe installation.

The tape also has millimetre scale for measuring the pipe diameter.

Product code	Range	Length	Size (LxBxH)	Weight (kg)
SE-MITTA-URA	DN20-DN600 (¾" - 24")	200 cm	47x42x14 mm	0,08

Center Punch



Harold Allen On-Center III is a magnetic center punch and level combination that accurately locates the position of holes to be drilled into pipes. Excellent for field or shop use.

Product code	Range	Size (LxBxH)	Weight (kg)
HA-PIIKI	DN25-DN250 (1" - 10")	149x87x13 mm	0,22

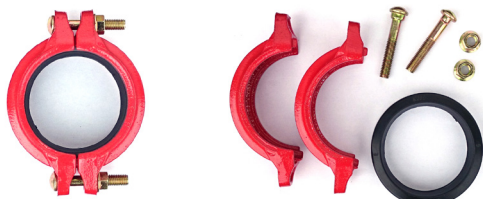
Installation instructions - Grooved Couplings

1



Control the pipe end, gasket seating surface and the groove and make sure that there are no bumps, nicks, surface defects, dirt or loose particles. If so, remove them first to prevent leaks.

2



Unscrew the pre-assembled couplings using an impact wrench.

3



Apply a thin layer of neutral lubricant onto the sealing lips of the gasket. Also apply lubricant to the interior side of the housings.

4



Slide the gasket over the end of the pipe and make sure that it covers the end completely.

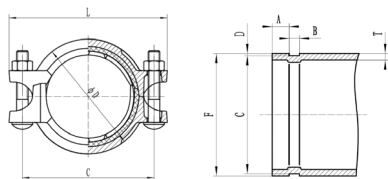
5



Bring the two pipe ends together and push the gasket over the end of the pipe. Make sure that the gasket is in the middle and that it covers both pipe ends.

Installation instructions - Grooved Couplings

6



The outer diameter of the housing and the groove diameter must match the specifications.

7



Place one housing around the gasket. Once it is placed over the gasket, you shall see that the housing fits in the groove.

8



Stick a bolt through the housing. Make sure that the head of the bolt perfectly fits in the housing.

9



Place the second housing over the bolt and turn the nut finger-tight on the bolt. Then place the second bolt and tighten it finger-tight.

10



Tighten both bolts alternately using an impact wrench with a suitable socket wrench until the coupling is completely closed. You can optionally tighten the bolts to the specified torque using a torque wrench. Applying a higher torque will not improve the sealing and can damage the coupling (see table on page 38).

Installation instructions - Mechanical Tees

1



Check the appropriate hole cut dimension and select the correct hole saw (see table on page 38). Make sure that the welded seam of the pipe is located at the bottom.

2



After drilling the hole, clean off the burrs from the drilled hole, both inside and outside the borehole

3



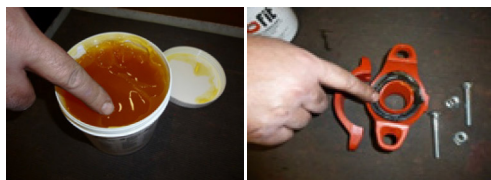
Remove the irregularities and the remains with a flexible magnet.

4



Unscrew the nuts out of the preassembled mechanical tee.

5



Lubricate the gasket with neutral lubricant.

Installation instructions - Mechanical Tees

6



Position the upper housing of the mechanical tee over the drilled hole.

7



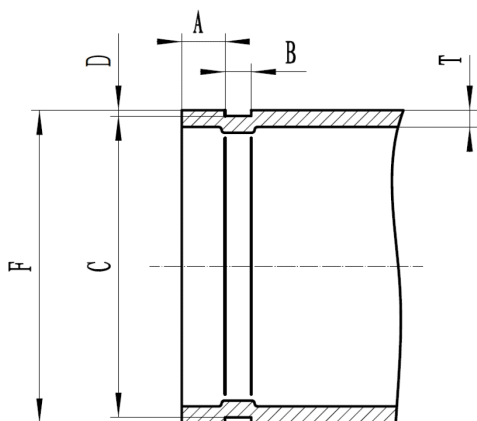
Place the bottom part of the housing around the pipe. Screw the first nut hand tight, and then the second.

8



Tighten both nuts alternately with an impact wrench until they are firmly attached. Tighten the bolts to the specified torque using a torque wrench (see table on page 38). Applying a higher torque will not improve the sealing and may damage the coupling, nuts and bolts. Check that the installed mechanical tee is level.

Groove Dimensions



DN	Outer diameter of pipe			Gasket seating surface A	Groove width B	Groove bottom diameter C		Groove depth D	Wall thickness T	Pipe end diameter F
mm	Koko (mm)	+ mm	- mm	± 0,76 mm	± 0,76 mm	Koko	mm	mm	mm	mm
25	33,7	0,41	0,68	15,88	7,14	30,2	-0,38	1,6	2,0	34,5
32	42,4	0,5	0,6	15,88	7,14	38,99	-0,38	1,6	2,0	43,3
40	48,3	0,44	0,52	15,88	7,14	45,09	-0,38	1,6	2,0	49,4
50	60,3	0,61	0,61	15,88	8,74	57,15	-0,37	1,6	2,0	62,2
65	76,1	0,76	0,76	15,88	8,74	72,26	-0,46	1,98	2,0	77,7
80	88,9	0,89	0,79	15,88	8,74	84,94	-0,46	1,98	2,0	90,6
100	114,3	1,14	0,79	15,88	8,74	110,08	-0,51	2,11	2,3	116,2
125	139,7	1,4	0,79	15,88	8,74	135,48	-0,51	2,11	2,9	141,7
150	168,3	1,6	0,79	15,88	8,74	163,96	-0,56	2,16	2,9	170,7
200	219,1	1,6	0,79	19,05	11,91	214,4	-0,64	2,39	3,6	221,5

Torque Specifications

For proper sealing, torque standards must be respected (see adjacent table).

A torque too big will not improve the sealing property of the coupling. On the contrary, it may damage the bolts and housing, even causing disconnections.

A torque too small will lead to leakage. Both disconnections and leakage may cause injuries and financial losses.

Bolt size	Torque (Nm)
M8 (1/4")	20 ~ 30
M10 (3/8")	60 ~ 70
M12 (1/2")	90 ~ 100
M14 (9/16")	135 ~ 150
M16 (5/8")	200 ~ 230
M20 (3/4")	270 ~ 300

Size Table for Hole Saws



Outlet (DN)	Coupling size	Hole saw size (mm)
15	All	30+1
20	All	30+1
25	DN32 -DN40	30+1
25	DN50 and bigger	38+1
32	All	46+1
40	DN50	46+1
40	DN65 and bigger	53+1
50	All	64+1
65	All	80+1
80	All	92+1
100	All	111+1

Notes

[illegible]

[illegible]

[illegible]



ENEXIA
PIPING INNOVATIONS

SIA Arcofire

Office:

Maza Nometnu street 31 , Office Nr: 308, LV-1002, Riga, Latvia.

Contacts:

Zintis Zabers

Mob: +371 28365225

E-mail: zintis@arcofire.com

Janis Krievins

Mob: +371 28378266

E-mail: janis@arcofire.com

WWW: www.arcofire.com